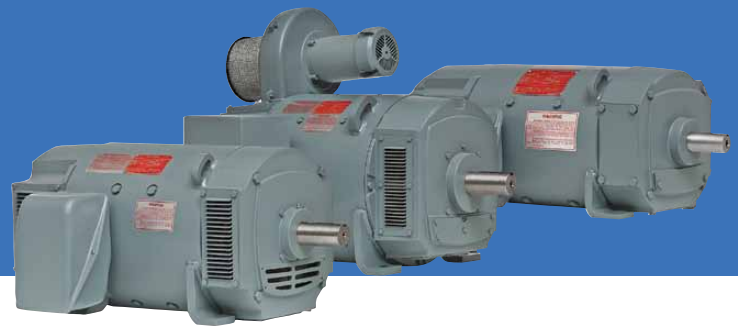
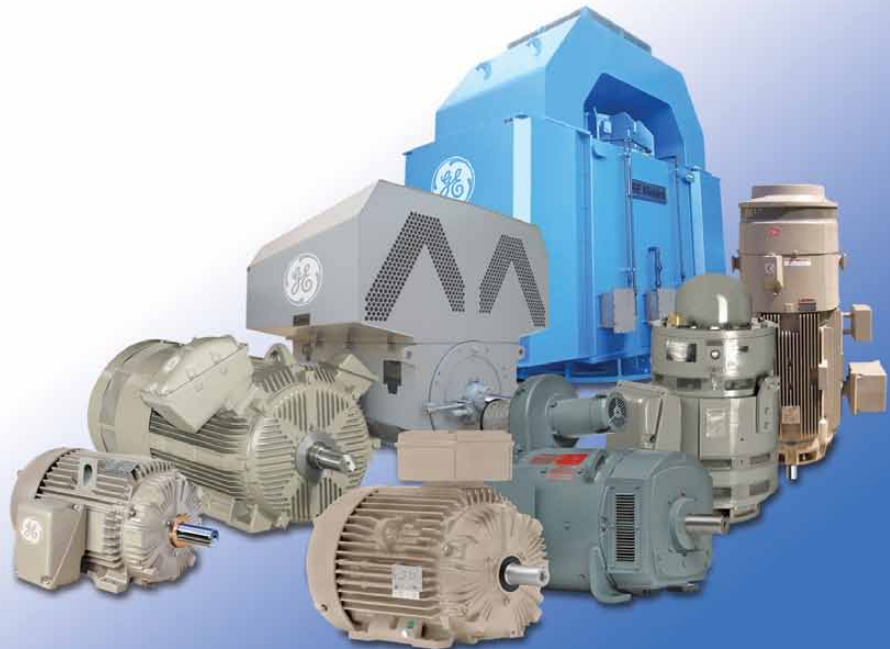


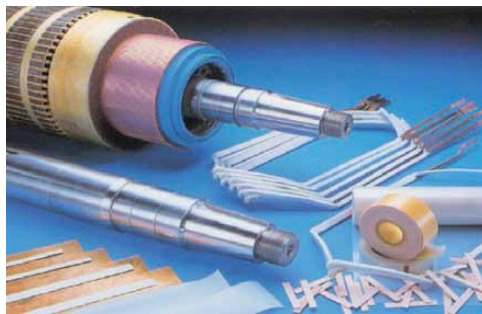
8.0 DC Motors



- 8.1 Standard Features
- Kinamatic II™
- 8.2 Shunt Wound - Self Ventilated
- 8.3 Shunt Wound - Separately Ventilated
- 8.4 Shunt Wound - Blower Ventilated
- 8.5 Shunt Wound - Totally Enclosed
- 8.6 Type-K Power Supply
- 8.7 PY Design and BC42 and BC46 Design Tachometers
- 8.8 DC Dimensions
- 8.19 DC Motor Kits and Accessories
- 8.21 Mill Duty DC Motor - MD800
- 8.22 Dimensions



Genuine Parts



Genuine GE Parts Advantages

Superior Product Quality

- Genuine GE parts built to original designs using latest materials and manufacturing processes.
- A full complement of spare parts are available for the entire range of GE motors.

Exact Fit and Specification

- Average installation time is reduced compared to competitor parts in GE motors.

World Class Service

- Our dedicated renewal parts team is fully integrated with technology and manufacturing.
- Identification of common spare parts is based simply on machine model or serial number.

Spare Parts Program

- Customers minimize downtime with an adequate spare parts inventory plan for their GE motors.

Service

GE Power Conversion has a highly motivated and technically skilled parts team that supports knowledgeable Authorized Motor Part Distributors.

Call us at 1-(800)-458-0451

Email us at motorparts@ge.com

Direct Current Motors

Kinamatic II™

Standard Features



HP Range	1-500
Base Speed	1150RPM, 1750RPM
Armature Voltage	240V, 500V
Field Voltage	300/150, 240/120
Accessory Mounting	8.5" accessory mounting rabbet with accessory shaft extension
Agency Approvals	CSA
Altitude	3300 ft
Ambient	40°C
Balance/Vibration	Measured at top speed: Peak-to-Peak amplitude 0.0015"
Bearing Caps	Cast iron CD258AT-CD5010AY both DE and CE
Bearing Type	Antifriction ball, CDL182AT-CD2010AT: double shielded, CD258AT-CD5010AY: open
Coils	CD180AT - CD329AT random wound - dip and baked CD360AT - CD5010AY TREC® coils
Conduit Box	Fabricated steel, 360° rotatable, gasketed, oversized
Current Overload	Occasionally repeated loads of 150% of base speed full load current
Endbells	CD182AT-CD500AT: Cast Iron, CD5010AY: CE- cast iron, DE-fabricated steel
Frame Material	Rolled Steel
Frame Size	CD182AT-CD5010AY
Grease	Lithium soap based
Grease Fittings	Alemite
Ground	Bronze bolt in conduit box
Insulation Class	Class F
Insulation System	Armature Treatment: Radiant Heat Process (RHP)
Lifting Means	Two (2) welded lifting lugs
Mounting	F1, modifiable to F2
Nameplate	Stainless Steel
Paint	ANSI #49 grey, heavy duty enamel
Relubrication	CDL182AT-CD2110AT: pre-lubricated, CD258AT-CD5010AY zerk grease fittings
Service Factor	1.0
Temperature Rise	Class F @ rated load and rated base speed
Tests	Routine Test: Report available upon request and purchase order
Warranty	24 months from date of installation or 28 months from date of manufacture; whichever occurs first

DC Motors – Kinamatic™
Type-C Power Supply

Pricing



Base Mounted - GE CD180AT-CD500AT
Shunt Wound - Dripproof Fully Guarded - Self Ventilated

HP	RPM	Armature Volts	Field Volts	Armature Amps	Field Amps	Frame	Cat. No.	List Price	Price Symbol	Norm. Stk.	Wt. (lbs)	C Dim. (in)	Notes
2	1750/2300	240	300/150	7.6	.35/.20	L182AT	D587	\$3,608	GO-2AS	Y	83	15.30	
3	1750/2300	240	300/150	11.0	.34/.23	186AT	D403	\$4,248	GO-2AS	Y	105	16.80	
3	1750/2300	500	300/150	5.1	.55/.30	186AT	D588	\$4,248	GO-2AS	Y	105	16.80	
3	1750/2300	240	240/120	11.0	.44/.28	186ATC	D404	\$4,420	GO-2AS	Y	102	16.80	75
5	1750/2300	240	300/150	18.0	.45/.27	L186AT	D409	\$5,224	GO-2AS	Y	128	18.80	
5	1750/2300	500	300/150	8.5	.72/.42	L186AT	D407	\$5,224	GO-2AS	N	128	18.80	
5	1750/2300	240	240/120	17.9	.57/.39	L186ATC	D410	\$5,396	GO-2AS	N	128	18.80	75
7.5	1750/2300	240	300/150	26.5	.95/.52	189AT	D417	\$6,304	GO-2AS	N	162	20.80	
7.5	1750/2300	500	300/150	13.2	.78/.54	218AT	D421	\$6,304	GO-2AS	Y	234	24.20	
7.5	1750/2300	240	240/120	28.1	.98/.63	218ATC	D422	\$6,806	GO-2AS	Y	243	24.20	75
10	1750/2300	240	300/150	36.6	1.12/.64	219AT	D425	\$7,184	GO-2AS	Y	252	25.20	
10	1750/2300	500	300/150	17.2	1.35/.88	219AT	D423	\$7,184	GO-2AS	Y	252	25.20	
10	1750/2300	240	240/120	36.6	1.40/.86	219ATC	D427	\$7,686	GO-2AS	Y	252	25.20	75
15	1750/2300	240	300/150	56.0	1.30/.80	258AT	D434	\$8,642	GO-2AS	Y	361	27.10	
15	1750/2300	500	300/150	25.2	1.60/.88	258AT	D432	\$8,642	GO-2AS	Y	361	27.10	
15	1750/2300	240	240/120	55.1	1.67/.89	258ATC	D435	\$9,144	GO-2AS	N	378	27.10	75
20	1750/2300	240	300/150	70.5	1.42/.95	259AT	D441	\$9,910	GO-2AS	Y	403	28.80	
20	1750/2300	500	300/150	35.0	1.53/.83	259AT	D437	\$9,910	GO-2AS	Y	403	28.80	
25	1750/2300	240	300/150	91.0	1.47/.90	287AT	D444	\$12,236	GO-2AS	Y	493	31.00	
25	1750/2300	500	300/150	42.7	1.76/1.20	287AT	D442	\$12,236	GO-2AS	Y	493	31.00	
25	1150/2000	240	300/150	89.0	1.89/1.08	328AT	D589	\$15,900	GO-2AS	N	769	35.40	
30	1750/2300	240	300/150	107.0	1.56/1.11	288AT	D448	\$13,468	GO-2AS	Y	548	32.70	
30	1750/2300	500	300/150	50.4	2.08/1.16	288AT	D445	\$13,468	GO-2AS	Y	548	32.70	
40	1750/2100	500	300/150	65.4	2.32/1.69	328AT	D541	\$15,844	GO-2AS	N	769	35.40	
40	1750/2100	500	300/150	65.4	2.32/1.69	328AT	D542	\$15,844	GO-2AS	N	769	35.40	70
40	1150/2000	500	300/150	64.9	2.90/1.35	366AT	D453	\$21,084	GO-2AS	N	860	35.90	
50	1750/2100	500	300/150	83.7	2.32/1.70	328AT	D449	\$18,098	GO-2AS	Y	769	35.40	
50	1750/2100	500	300/150	83.7	2.32/1.70	328AT	D450	\$18,098	GO-2AS	N	769	35.40	70
50	1150/2000	500	300/150	80.0	2.50/1.32	368AT	D543	\$24,280	GO-2AS	N	1020	38.90	
60	1750/2100	500	300/150	97.4	3.00/2.30	366AT	D544	\$20,716	GO-2AS	N	860	35.90	
60	1150/2000	500	300/150	98.0	2.50/1.30	368AT	D462	\$27,744	GO-2AS	N	1020	38.90	
60	850/1700	500	300/150	99.0	3.00/1.30	407AT	D590	\$33,800	GO-2AS	N	1300	40.10	
75	1750/2100	500	300/150	122.0	3.06/2.30	366AT	D455	\$24,338	GO-2AS	Y	860	35.90	
75	1750/2100	500	300/150	122.0	3.06/2.30	366AT	D456	\$24,338	GO-2AS	N	860	35.90	70
100	1750/2000	500	300/150	161.0	3.80/2.80	368AT	D465	\$30,532	GO-2AS	N	1020	38.90	
100	1750/2000	500	300/150	160.0	3.80/2.80	368AT	D466	\$30,532	GO-2AS	N	1020	38.90	70
125	1750/2000	500	300/150	200.0	3.06/2.55	407AT	D471	\$36,158	GO-2AS	Y	1300	40.10	
150	1750/2000	500	300/150	238.0	3.80/3.30	409AT	D476	\$43,502	GO-2AS	N	1600	44.60	
150	1750/2000	500	300/150	238.0	3.80/3.30	409AT	D477	\$43,502	GO-2AS	N	1600	44.60	70
200	1750/2000	500	300/150	319.0	4.00/3.25	504AT	D480	\$55,176	GO-2AS	N	1900	45.70	
250	1750/1900	500	300/150	394.0	8.00/6.68	506AT	D547	\$67,844	GO-2AS	N	2290	49.70	
300	1750/1900	500	300/150	473.0	8.00/6.83	506AT	D486	\$81,350	GO-2AS	N	2290	49.70	

Notes:
70 F-2 assembly
75 C-Face Mounting

DC Motors – Kinamatic™
Type-C Power Supply

Pricing (cont.)



Base Mounted - GE CD180AT-CD500AT
Shunt Wound - Dripproof Fully Guarded - Separately Ventilated

HP	RPM	Armature Volts	Field Volts	Armature Amps	Field Amps	Frame	Cat. No.	List Price	Price Symbol	Norm. Stk.	Wt. (lbs)	C Dim. (in)	Notes
10	1750/2300	240	300/150	36.6	1.12/0.64	219AT	D426	\$7,184	GO-2AS	N	252	25.20	
10	1750/2300	500	300/150	17.2	1.35/0.88	219AT	D424	\$7,184	GO-2AS	Y	252	25.20	
15	1750/2300	500	300/150	25.2	1.60/0.88	258AT	D433	\$8,642	GO-2AS	N	361	27.10	
20	1750/2300	500	300/150	35.0	1.53/0.83	259AT	D438	\$9,910	GO-2AS	N	403	28.80	
20	1750/2300	500	300/150	35.0	1.53/0.83	259AT	D439	\$9,910	GO-2AS	N	403	28.80	70
30	1750/2300	500	300/150	50.4	2.08/1.16	288AT	D446	\$12,272	GO-2AS	N	548	32.70	
40	1750/2100	500	300/150	67.0	2.03/1.32	327AT	D548	\$14,432	GO-2AS	N	691	33.40	
40	1150/2000	500	300/150	70.2	2.30/1.01	328AT	D609	\$18,374	GO-2AS	N	769	35.30	
50	1750/2100	500	300/150	83.7	2.30/1.70	328AT	D451	\$16,480	GO-2AS	Y	769	35.30	
50	1150/2000	500	300/150	82.0	2.90/1.35	366AT	D610	\$21,154	GO-2AS	N	860	35.90	
60	1750/2100	500	300/150	97.0	2.40/1.60	L328AT	D576	\$18,860	GO-2AS	Y	888	37.90	
75	1750/2100	500	300/150	125.0	2.40/1.60	329AT	D577	\$22,154	GO-2AS	Y	888	37.90	
100	1750/2000	500	300/150	160.0	3.90/3.00	368AT	D558	\$27,784	GO-2AS	N	1020	38.90	
125	1750/2000	500	300/150	202.0	3.80/3.00	368AT	D559	\$32,900	GO-2AS	Y	1020	38.90	
125	850/1700	500	300/150	203.0	3.70/1.72	506AT	D613	\$47,614	GO-2AS	N	2290	49.70	
150	1750/2000	500	300/150	242.0	4.00/3.37	407AT	D560	\$37,868	GO-2AS	N	1300	40.10	
150	850/1700	500	300/150	240.0	9.40/2.90	506AT	D615	\$53,866	GO-2AS	N	2290	49.70	
200	1750/2000	500	300/150	318.0	6.10/4.60	L409AT	D574	\$48,020	GO-2AS	Y	1650	48.10	
250	1750/1900	500	300/150	400.0	4.30/3.87	504AT	D575	\$59,036	GO-2AS	N	1900	45.70	
250	1150/1700	500	300/150	401.0	6.50/3.48	506AT	D618	\$69,500	GO-2AS	N	2290	49.70	
300	1150/1600	500	300/150	480.0	6.40/4.00	508AT	D619	\$81,514	GO-2AS	N	2810	54.70	
400	1750/1900	500	300/150	629.0	6.42/5.50	508AT	D489	\$98,320	GO-2AS	Y	2810	54.70	
500	1750/1900	500	300/150	781.0	8.10/6.80	5010AY	D620	\$131,440	GO-2AS	N	4260	65.50	104

Notes:

- 70 F-2 assembly
- 104 4 1/8" shaft diameter

DC Motors – Kinamatic™
Type-C Power Supply

Pricing (cont.)



Base Mounted - GE CD180AT-CD500AT
Shunt Wound - Dripproof Fully Guarded - Blower Ventilated

HP	RPM	Armature Volts	Field Volts	Armature Amps	Field Amps	Frame	Cat. No.	List Price	Price Symbol	Norm. Stk.	Wt. (lbs)	C Dim. (in)	Notes
7.5	1750/2300	240	300/150	26.5	0.95/0.52	189AT	D418	\$8,578	GO-2AS	Y	172	23.00	
10	1750/2300	500	300/150	17.2	1.35/0.88	219AT	D561	\$9,458	GO-2AS	N	272	25.20	
15	1750/2300	500	300/150	25.2	1.60/0.88	258AT	D562	\$10,916	GO-2AS	N	381	27.10	
20	1750/2300	500	300/150	35.0	1.53/0.83	259AT	D563	\$12,184	GO-2AS	N	423	28.80	
20	1150/2000	500	300/150	33.9	1.98/0.94	327AT	D650	\$14,794	GO-2AS	N	752	33.40	
25	1750/2300	500	300/150	42.7	1.76/1.20	287AT	D564	\$13,728	GO-2AS	N	513	31.00	
25	1150/2000	500	300/150	42.0	2.30/1.02	328AT	D651	\$16,880	GO-2AS	N	830	35.30	
30	1750/2300	500	300/150	50.4	2.08/1.16	288AT	D565	\$14,848	GO-2AS	Y	576	32.70	
40	1750/2100	500	300/150	67.0	2.03/1.32	327AT	D566	\$17,298	GO-2AS	Y	752	33.40	
50	1750/2100	500	300/150	82.0	2.30/1.70	328AT	D567	\$19,346	GO-2AS	N	830	35.30	
60	1750/2100	500	300/150	97.0	2.40/1.55	L328AT	D578	\$21,726	GO-2AS	N	949	37.90	
60	1750/2100	500	300/150	97.2	3.40/2.38	365AT	D652	\$25,020	GO-2AS	N	815	33.70	
60	1150/2000	500	300/150	97.0	4.00/1.78	368AT	D654	\$27,032	GO-2AS	N	1085	38.90	
75	1750/2100	500	300/150	125.0	2.40/1.60	329AT	D579	\$25,020	GO-2AS	Y	949	37.90	
75	1750/2100	500	300/150	125.0	2.40/1.60	329AT	D655	\$25,020	GO-2AS	N	949	37.90	70
75	1750/2100	500	300/150	122.0	2.40/1.85	366AT	D656	\$27,496	GO-2AS	Y	925	35.90	
75	1750/2100	500	300/150	122.0	2.40/1.85	366AT	D657	\$27,496	GO-2AS	N	925	35.90	70
75	1150/2000	500	300/150	123.0	3.80/1.80	368AT	D658	\$31,564	GO-2AS	N	1085	38.90	
100	1750/2000	500	300/150	160.0	3.90/3.00	368AT	D467	\$30,942	GO-2AS	Y	1085	38.90	
100	1150/2000	500	300/150	162.0	7.10/2.96	407AT	D659	\$37,866	GO-2AS	N	1365	40.10	
100	850/1700	500	300/150	614.0	6.00/2.40	409AT	D660	\$43,834	GO-2AS	N	1665	44.60	
125	1750/2000	500	300/150	202.0	3.80/3.00	368AT	D468	\$36,058	GO-2AS	Y	1085	38.90	
125	1150/2000	500	300/150	201.0	7.10/3.30	409AT	D661	\$43,834	GO-2AS	N	1665	44.60	
150	1750/2000	500	300/150	242.0	4.00/3.37	407AT	D473	\$41,026	GO-2AS	Y	1365	40.10	
150	1150/2000	500	300/150	244.0	7.29/3.54	409AT	D662	\$50,472	GO-2AS	N	1665	44.60	
200	1750/2000	500	300/150	318.0	6.10/4.60	L409AT	D478	\$51,726	GO-2AS	N	1720	48.00	
200	1750/2000	500	300/150	318.0	6.10/4.60	L409AT	D663	\$51,726	GO-2AS	N	1720	48.00	70
250	1750/1900	500	300/150	400.0	4.30/3.87	504AT	D482	\$62,742	GO-2AS	Y	1982	45.70	
250	1750/1900	500	300/150	400.0	4.30/3.87	504AT	D664	\$62,742	GO-2AS	N	1982	45.70	70
300	850/1500	500	300/150	477.0	12.00/5.10	5010AY	D490	\$96,214	GO-2AS	N	4343	65.50	104
400	1150/1500	500	300/150	631.0	8.20/5.50	5010AY	D492	\$121,618	GO-2AS	N	4343	65.50	104

Notes:
70 F-2 assembly
104 4 1/8" shaft diameter

DC Motors – Kinamatic™
Type-C Power Supply

Pricing (cont.)



Base Mounted - GE CD180AT-CD500AT
Shunt Wound - Totally Enclosed

HP	RPM	Armature Volts	Field Volts	Armature Amps	Field Amps	Frame	Cat. No.	List Price	Price Symbol	Norm. Stk.	Wt. (lbs)	C Dim. (in)	Notes
1	1750/2300	240	300/150	3.6	0.35/0.22	L182AT	D681	\$4,146	GO-2AS	N	83	15.30	55
1	1150/2000	240	240/120	3.7	0.53/0.21	L182AT	D680	\$4,442	GO-2AS	N	83	15.30	55
2	1750/2300	240	300/150	7.1	0.29/0.17	L186AT	D553	\$4,386	GO-2AS	N	128	18.80	55
3	1750/2300	240	300/150	10.8	0.29/0.17	L186AT	D530	\$5,618	GO-2AS	Y	128	18.80	55
3	1750/2300	500	300/150	5.1	0.45/0.26	L186ATC	D682	\$6,564	GO-2AS	N	128	18.80	55, 77
5	1750/2300	240	300/150	17.6	0.38/0.24	189AT	D408	\$8,484	GO-2AS	N	165	23.00	76
5	1750/2300	240	240/120	17.2	0.95/0.65	2110AT	D684	\$8,974	GO-2AS	Y	280	26.70	55
5	1750/2300	240	300/150	17.2	0.74/0.45	2110AT	D683	\$8,974	GO-2AS	N	280	26.70	55
5	1750/2300	500	300/150	8.3	0.60/0.40	189AT	D415	\$8,484	GO-2AS	N	165	23.00	76
5	1750/2300	500	300/150	8.2	0.76/0.52	2110AT	D685	\$8,974	GO-2AS	Y	280	26.70	55
7.5	1750/2300	240	300/150	26.2	1.15/0.70	2110AT	D430	\$10,274	GO-2AS	N	287	29.30	76
7.5	1750/2300	500	300/150	12.8	0.74/0.44	2110AT	D429	\$10,274	GO-2AS	N	287	29.30	76
7.5	1750/2300	500	300/150	12.4	0.91/0.58	259AT	D686	\$10,892	GO-2AS	Y	403	28.90	55
10	1750/2300	240	300/150	34.3	0.88/0.55	259AT	D440	\$11,736	GO-2AS	N	442	31.90	
10	1750/2300	500	300/150	16.3	1.15/0.72	259AT	D436	\$11,736	GO-2AS	N	442	31.90	
15	1750/2300	240	300/150	51.7	0.98/0.68	288AT	D568	\$15,158	GO-2AS	N	587	36.40	
15	1750/2300	500	300/150	24.5	0.98/0.68	288AT	D569	\$15,158	GO-2AS	N	587	36.40	
20	1750/2300	240	300/150	68.5	1.24/0.86	327AT	D570	\$17,420	GO-2AS	N	732	37.60	
25	1750/2300	240	300/150	85.0	1.50/1.10	328AT	D572	\$20,098	GO-2AS	N	812	39.50	
30	1750/2300	240	300/150	103.0	1.80/1.30	366AT	D460	\$22,594	GO-2AS	N	940	40.40	
30	1750/2300	500	300/150	48.7	1.80/1.24	366AT	D457	\$22,594	GO-2AS	N	940	40.40	
40	1750/2100	240	300/150	136.0	0.95/0.76	368AT	D469	\$28,522	GO-2AS	N	1100	43.40	
40	1750/2100	500	300/150	64.6	1.49/1.20	368AT	D463	\$28,522	GO-2AS	N	1100	43.40	
50	1750/2100	500	150/300	80.7	1.49/1.20	409AT	D554	\$34,340	GO-2AS	N	1680	49.40	
75	1750/2100	500	300/150	120.0	1.50/1.25	409AT	D474	\$41,592	GO-2AS	N	1680	49.40	

Notes:

- 55 TENV Construction
- 76 Accessory mounting faces not available for TEFC CD180AT and CD210AT frames
- 77 8 1/2" C-face rabbet

DC Motors – Kinamatic™
Type-K Power Supply

Pricing (cont.)



Base and End Mounted - NEMA 180-210 Frame
Shunt Wound - Dripproof

HP	RPM	Armature Volts	Field Volts	Armature Amps	Field Amps	Frame	Cat. No.	List Price	Price Symbol	Norm. Stk.	Wt. (lbs)	C Dim. (in)	Notes
1	1750/2050	180	200/100	4.9	0.44/0.37	L182AT	D585	\$5,196	GO-2AS	N	83	15.30	
1	1750/2050	180	200/100	4.9	0.44/0.37	L182ACY	D402	\$5,368	GO-2AS	N	80	15.30	78
1.5	1750/2050	180	200/100	7.3	0.44/0.37	L182ACY	D536	\$5,590	GO-2AS	N	80	17.50	64, 78
2	1750/2050	180	200/100	9.4	0.59/0.39	186ACY	D406	\$5,812	GO-2AS	N	102	16.80	78
2	1750/2050	180	200/100	9.4	0.59/0.39	186ATC	D537	\$5,812	GO-2AS	N	102	16.80	77
3	1750/2050	180	200/100	14.4	0.59/0.39	186ATC	D539	\$5,648	GO-2AS	Y	102	18.80	77
5	2500/2750	180	200/100	23.6	0.93/0.72	186AT	D586	\$5,262	GO-2AS	N	105	16.80	64
5	1750/2050	180	200/100	24.1	0.75/0.54	L186ATC	D413	\$5,842	GO-2AS	Y	128	18.80	64, 77
5	1750/2050	180	200/100	24.1	0.75/0.54	L186ATC	D414	\$8,116	GO-2AS	N	128	18.80	77, 88
5	1750/2050	180	200/100	23.7	1.38/0.94	219ATC	D428	\$9,392	GO-2AS	Y	261	25.20	77

8.6

DC Motors – Kinamatic™



Shunt Wound - Totally Enclosed

HP	RPM	Armature Volts	Field Volts	Armature Amps	Field Amps	Frame	Cat. No.	List Price	Price Symbol	Norm. Stk.	Wt. (lbs)	C Dim. (in)	Notes
1	1750/2050	180	200/100	5.0	0.28/0.22	L182ATC	D401	\$5,298	GO-2AS	N	80	15.30	55, 77
1	1750/2050	180	200/100	5.0	0.28/0.22	L182ACY	D401	\$5,298	GO-2AS	N	80	15.30	55, 78
1.5	1750/2050	180	200/100	7.3	0.37/0.27	186ACY	D405	\$5,568	GO-2AS	Y	102	16.80	55, 78
1.5	1750/2050	180	200/100	7.3	0.37/0.27	186ATC	D540	\$5,568	GO-2AS	N	102	16.80	55, 77
2	1750/2050	180	200/100	9.5	0.48/0.37	L186ATC	D411	\$5,714	GO-2AS	Y	128	18.80	55, 77
2	1750/2050	180	200/100	9.5	0.48/0.37	L186ACY	D412	\$5,714	GO-2AS	Y	128	18.80	55, 78
3	1750/2050	180	200/100	13.9	0.63/0.46	189ACY	D555	\$5,988	GO-2AS	N	160	20.80	55, 78
3	1750/2050	180	200/100	13.9	0.63/0.46	189ATC	D419	\$5,988	GO-2AS	Y	160	20.80	55, 77
5	1750/2050	180	200/100	23.3	1.00/0.74	189ATC	D420	\$7,590	GO-2AS	Y	160	20.80	58, 64, 76, 77
5	1750/2050	180	200/100	23.0	0.81/0.63	2110ATC	D431	\$10,994	GO-2AS	Y	289	26.70	55, 77
5	1750/2050	180	200/100	23.3	1.00/0.74	189AT	D583	\$7,418	GO-2AS	Y	162	20.80	58, 76, 64
5	1750/2050	180	200	23.0	0.80/0.60	2110ACY	D584	\$11,662	GO-2AS	Y	389	8.50	55, 74, 77

Notes:

- 55 TENV Construction
- 58 TEFC Construction
- 64 Suitable for constant torque to 60% of base speed
- 74 1.125" diameter shaft
- 76 Accessory mounting faces not available for TEFC CD180AT and CD210AT frames
- 77 8 1/2" C-face rabbet
- 78 4 1/2" C-face rabbet
- 88 Blower provided with filter

DC Motors – Tachometer by *excellon*
PY Design Technologies, Inc.

Pricing



AC Tachometer Generators - Totally Enclosed

HP	Volts/ 100RPM	% Ripple	GE Frame	Frame	Bearings	Base	Rotation	Cat. No.	List Price	Price Symbol	Norm. Stk.	Wt. (lbs)	C Dim. (in)	Notes
400-5000	28	NA	18	GE59	Ball	FLG	Either or Reversing Service	D120	\$1,204	GO-7PTC	Y	5	6.00	55

DC Tachometer Generators - Totally Enclosed

HP	Volts/ 100RPM	% Ripple	GE Frame	Frame	Bearings	Base	Rotation	Cat. No.	List Price	Price Symbol	Norm. Stk.	Wt. (lbs)	C Dim. (in)	Notes
100-5000	50	0.50%	18	GE59	Ball	FLG	Either; Reversing Service to 2500RPM	D123	\$2,480	GO-7PTC	Y	7	7.47	55
100-2500	100	0.50%	18	GE59	Ball	FLG	Either or Reversing Service	D122	\$2,480	GO-7PTC	Y	8	7.47	55

DC Motors – Tachometer
BC42 and BC46 Design

Pricing



DC Tachometer - Totally Enclosed Non-Ventilated

RPM	Volts/ 100RPM	GE Frame	NEMA Frame	Base	Cat. No.	List Price	Price Symbol	Norm. Stk.	Wt. (lbs)	C Dim. (in)	Notes
100-5000	50	46	56C	Bolt-On	D144	\$7,722	GO-7PTC	Y	41	14.63	55, 22
100-3600	100	46	56	Bolt-On	D128	\$8,289	GO-7PTC	Y	36	11.72	55
100-3600	100	46	56C	Bolt-On	D132	\$8,711	GO-7PTC	Y	41	14.63	55, 22
100-3600	100	46	56	Bolt-On	D139	\$8,185	GO-7PTC	Y	36	14.49	55, 22
100-2750	100	42	56	Bolt-On	D136	\$6,078	GO-7PTC	Y	25	10.50	55
100-2750	100	42	56C	Bolt-On	D143	\$5,526	GO-7PTC	Y	30	12.54	55, 22
100-5000	50	42	56C	Bolt-On	D149	\$5,641	GO-7PTC	Y	30	12.54	55, 22

DC Tachometer Generators - Explosion Proof
Class I, Group D; Class II, Group E, F, G

RPM	Volts/ 100RPM	GE Frame	NEMA Frame	Base	Cat. No.	List Price	Price Symbol	Norm. Stk.	Wt. (lbs)	C Dim. (in)	Notes
100-5000	50	18	56C	NB	D267	\$8,022	GO-7PTC	N	38	11.88	58
100-2500	100	18	56C	NB	D268	\$8,022	GO-7PTC	N	28	11.88	58

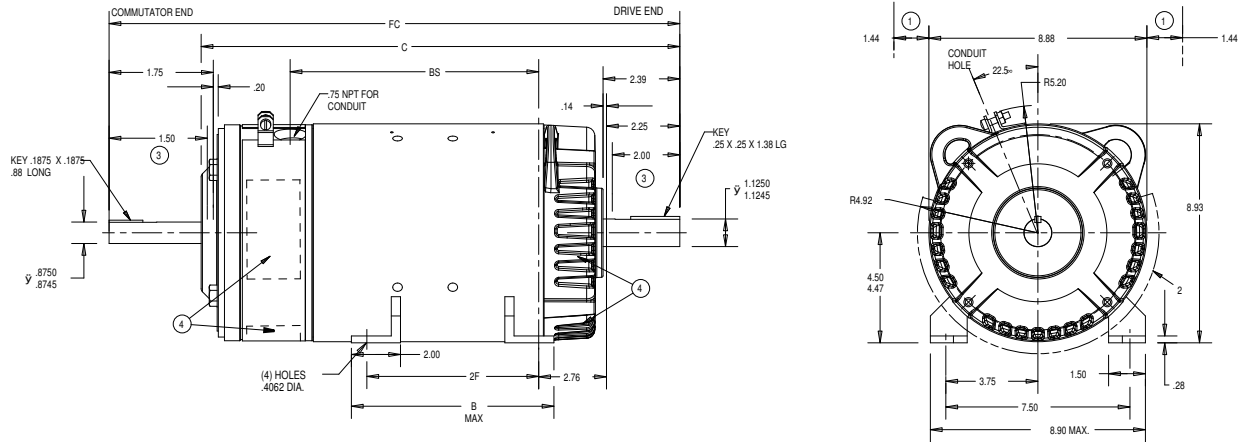
Notes:

- 22 Double shaft extension 1 7/8" long by 5/8" diameter each end
- 55 TENV Construction
- 58 TEFC Construction

DC Motors – Kinamatic™

Type CD, Dripproof Fully Guarded and Totally Enclosed
Non-Ventilated, Frames L182AT to 189AT

Motor Dimensions



Frame Size	Approx. Wk2 of Arm. Lb. Ft. ²	B	C	FC	2F	BS	Approx. Net. Wt. (lbs) ◇
L182AT	0.28	5.80	15.26	16.51	4.5	6.63	83
186AT	0.45	8.30	16.76	18.01	7.0	8.13	105
L186AT	0.67	8.30	18.76	20.01	7.0	10.13	128
189AT	0.77	11.56	20.76	22.01	10.0	12.13	162

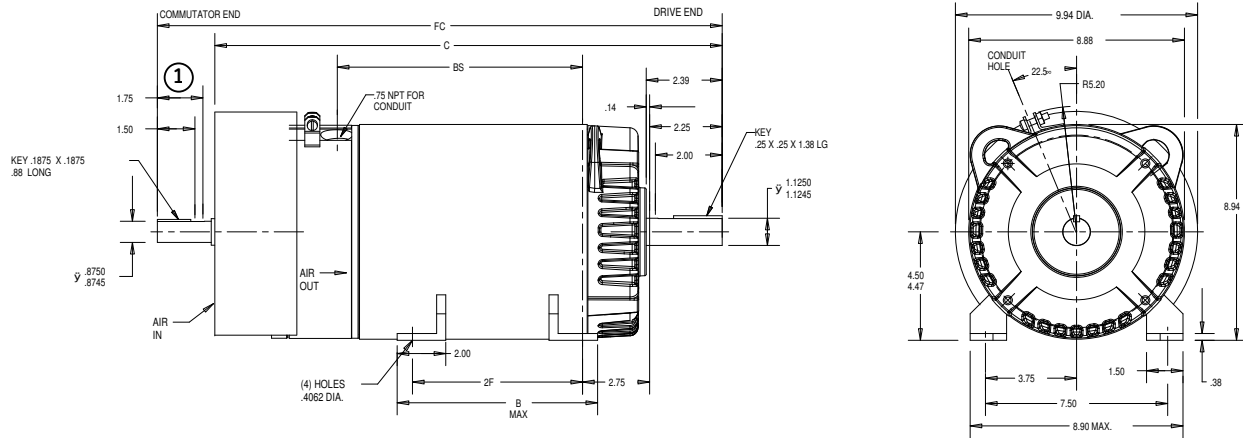
Notes:

- 1 Splashproof fully guarded machines will have additional covers, increasing the overall width at the commutator-end and drive-end side air openings
 - 2 Dripproof, fully guarded vertical drive-end shaft down machines will have additional covers, increasing the overall width and exceeding bottom feet at the commutator-end openings
 - 3 Represents minimum length of shaft available for hubs
 - 4 Air opening. For enclosure type and mounting position, see enclosure and mounting assembly. Totally enclosed machines will not have openings or covers on drive-end.
- The standard single shaft machine has the commutator end bearing bracket and shaft extension prepared to accept accessories. For additional information, see 36C697103AA.
- For blower ventilated, blower can only be mounted on side of motor because there is no air opening at the top of the motor. The motor leads exit at the top of the motor.
- Commutator-end shaft extension is furnished only when specifically ordered.
- Shaft runout shall not exceed 0.002 inch total indicator reading.
- ◇ For shipping weight add 15% to net weight.

DC Motors – Kinamatic™

Type CD, Dripproof Fully Guarded and Totally Enclosed Non-ventilated,
Frames L182ACY to 189ACY 4 1/2" Type C-Face Mounting with Feet

Motor Dimensions (cont.)



Frame Size	Approx. Wk2 of Arm. Lb. Ft. ²	B	C	FC	2F	BS	Approx. Net. Wt. (lbs) [◇]
L182ATC	0.28	5.80	17.45	19.47	4.5	6.63	83
186ATC	0.45	8.30	18.95	20.97	7.0	8.13	105
L186ATC	0.67	8.30	20.95	22.97	7.0	10.13	128
189ATC	0.77	11.56	22.95	24.97	10.0	12.13	165

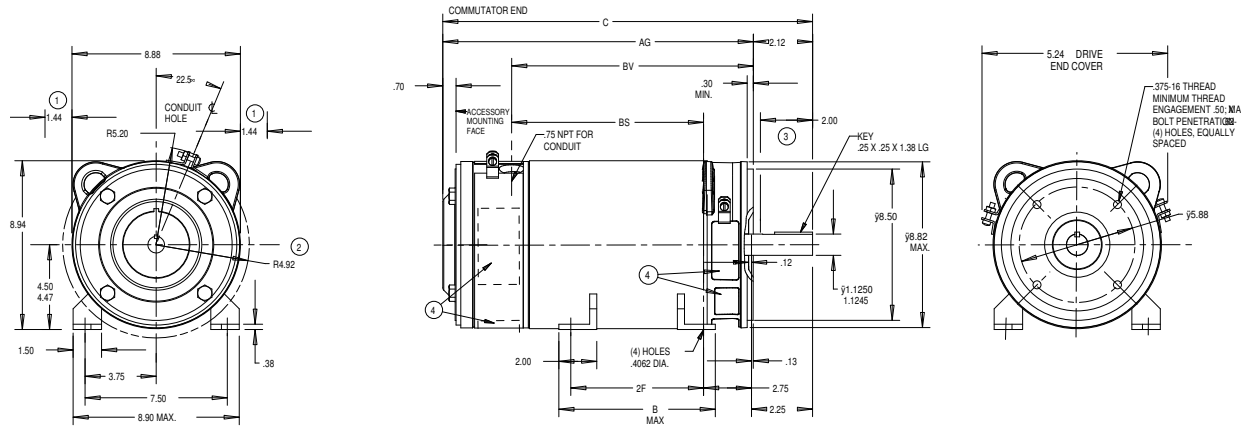
Notes:

- 1 Represents minimum length of shaft available for hubs
For mounting position see enclosure and mounting assembly
Shaft runout shall not exceed .002 inch total indicator reading
Commutator end-shaft extension is furnished only when specifically ordered
- ◇ For shipping weight add 15% to net weight.

DC Motors – Kinamatic™

Type CD, Dripproof Fully Guarded and Totally Enclosed Non-ventilated, Frames L182ATC to 189 ATC 8 1/2" Type C-Face Mounting with Feet

Motor Dimensions (cont.)



Frame Size	Approx. Wk2 of Arm. Lb. Ft. ²	B	C	FC	2F	BS	BV
L182ATC	0.28	5.80	15.26	16.51	4.5	6.63	9.51
186ATC	0.45	8.30	16.76	18.01	7.0	8.13	11.01
L186ATC	0.67	8.30	18.76	20.01	7.0	10.13	13.01
189ATC	0.77	11.56	20.76	22.01	10.0	12.13	15.01

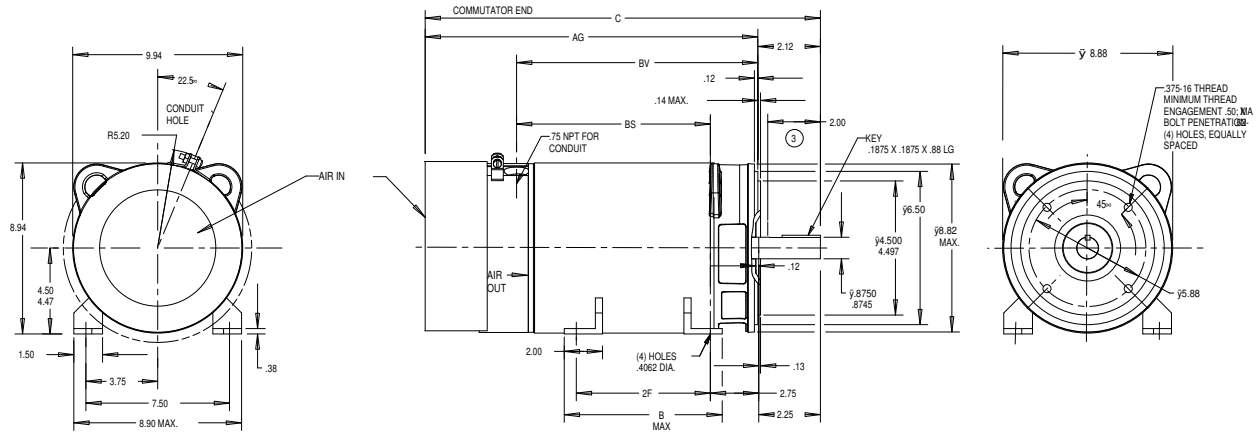
Notes:

- Splashproof fully guarded machines will have additional covers, increasing the overall width at the commutator-end and drive-end side air openings
- Dripproof, fully guarded vertical drive-end shaft down machines will have additional covers, increasing the overall width and exceeding bottom of mounting feet at the commutator-end openings
- Represents minimum length of shaft available for hubs
- Air opening. For enclosure type and mounting position, see enclosure and mounting assembly. Totally enclosed machines will not have openings or covers on drive-end.
Mounting face will be square and rabbet diameter concentric with shaft within .004 inch total indicator reading. Shaft runout not to exceed .002 inch total indicator reading
Feet will be supplied unless otherwise specified.
The standard single shaft machine has the commutator end bearing bracket and shaft extension prepared to accept accessories. For additional information, see 36C697103AA.

DC Motors – Kinamatic™

Type CD, Totally Enclosed Fan Cooled, Frames L182ACY to 189 ACY 4 1/2" Type C-Face Mounting with Feet

Motor Dimensions (cont.)



Frame Size	Approx. Wk2 of Arm. Lb. Ft. ²	B	C	2F	AG	BS	BV	Approx. Net. Wt. (lbs) ◇
L182ACY	0.28	5.80	17.45	4.5	15.33	6.63	9.51	83
186ACY	0.45	8.30	18.95	7.0	16.83	8.13	11.01	105
L186ACY	0.67	8.30	20.95	7.0	18.83	10.13	13.01	128
189ACY	0.77	11.56	22.95	10.0	20.83	12.13	15.01	165

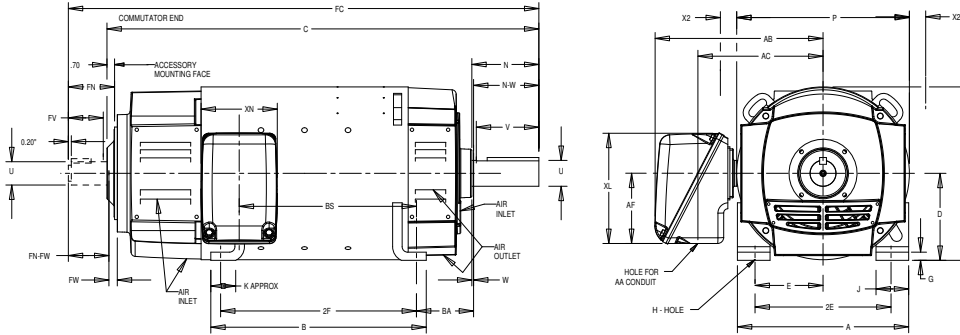
Notes:

- 3 Represents minimum length of shaft available for hubs
For mounting position see enclosure and mounting assembly
Mounting face will be square and rabbet diameter concentric with shaft within .004 inch total indicator
Feet will be supplied unless otherwise specified
- ◇ For shipping weight add 15% to net weight.

DC Motors – Kinamatic™

Type CD, Dripproof Fully Guarded* Splashproof, Totally Enclosed Non-ventilated,
Frames 218AT to 329AT with Feet

Motor Dimensions (cont.)



Frame Size	Approx. Net Wt. (lbs) [◇]	Approx. Wk2 of Arm. Lb. Ft ²	Drive End Key			Commutator End Key			Dimensions in Inches									
			Width	Thick	Length ±.03	Width	Thick	Length ±.03	A Max	B Max	C	D ⁽¹⁾	E	2F	G	H	J	K
218AT	234	1.35	0.3125	0.3125	1.75	0.2500	0.2500	1.00	10.40	11.56	24.22	5.25	4.25	10.0	0.50	0.4062	2.00	2.2
219AT	252	1.49	0.3125	0.3125	1.75	0.2500	0.2500	1.00	10.40	12.56	25.22	5.25	4.25	11.0	0.50	0.4062	2.00	2.2
2110AT	580	1.17	0.3125	0.3125	1.75	0.2500	0.2500	1.00	10.40	14.06	26.72	5.25	4.25	12.5	0.50	0.4062	2.00	2.2
258AT	361	2.91	0.3750	0.3750	2.25	0.3125	0.3125	1.50	12.40	14.06	27.14	6.25	5.00	12.5	0.62	0.5312	2.25	2.0
259AT	403	3.31	0.3750	0.3750	2.25	0.3125	0.3125	1.50	12.40	15.56	28.76	6.25	5.00	14.0	0.62	0.5312	2.25	2.0
287AT	493	4.67	0.5000	0.5000	2.25	0.3750	0.3750	2.00	13.88	14.16	30.98	7.00	5.50	12.5	0.64	0.5312	2.50	2.0
288AT	548	5.36	0.5000	0.5000	2.50	0.3750	0.3750	2.00	13.88	15.66	32.72	7.00	5.50	14.0	0.64	0.5312	2.50	2.0
327AT	691	8.45	0.5000	0.5000	2.50	0.5000	0.5000	2.25	15.88	15.96	33.44	8.00	6.25	14.0	0.75	0.6562	3.00	2.3
328AT	769	9.67	0.5000	0.5000	3.00	0.5000	0.5000	2.25	15.88	17.96	35.32	8.00	6.25	16.0	0.75	0.6562	3.00	2.3
L328AT	888		0.5000	0.5000	3.00	0.5000	0.5000	2.25	15.88	19.96	37.94	8.00	6.26	16.0	0.75	0.6562	3.00	2.3
329AT	888	11.40	0.5000	0.5000	3.00	0.5000	0.5000	2.25	15.88	19.96	37.94	8.00	6.25	18.0	0.75	0.6562	3.00	2.3

Frame Size	Dimensions in Inches														
	AA = 1.25					AA = 2.00					AA = 3.00				
	AB	AC	AF	XL	XN	AB	AC	AF	XL	XN	AB	AC	AF	XL	XN
210AT	9.62	7.56	3.62	5.94	4.38	11.48	8.92	4.62	7.38	5.38	Not Available				
250AT	10.62	8.58	3.62	5.94	4.38	11.74	9.18	4.62	7.38	5.38	Not Available				
280AT	11.34	9.28	3.62	5.94	4.38	12.46	9.90	4.62	7.38	5.38	14.90	11.28	6.62	10.50	8.56
320AT	Not Available					13.44	10.88	4.62	7.38	5.38	15.12	11.50	6.62	10.50	8.56

Frame Size	Dimensions in Inches																
	N	O	P	U ⁽⁴⁾	V ⁽³⁾	W	N-W	BA	FC	FN	FU ⁽⁴⁾	FV ⁽³⁾	FW	FN-FW	BS	XZ ⁽²⁾	
218AT	2.91	10.46	10.42	1.38	2.5	0.16	2.75	3.50	25.97	2.45	1.125	2.0	0.2	2.25	8.36	1.5	
219AT	2.91	10.46	10.42	1.38	2.5	0.16	2.75	3.50	26.97	2.45	1.125	2.0	0.2	2.25	9.36	1.5	
2110AT	2.91	10.46	10.42	1.38	2.5	0.16	2.75	3.50	28.47	2.45	1.125	2.0	0.2	2.25	10.87	1.5	
258AT	3.41	12.46	12.42	1.63	3.0	0.16	3.25	4.25	29.39	2.95	1.375	2.5	0.2	2.75	9.65	1.5	
259AT	3.41	12.46	12.42	1.63	3.0	0.16	3.25	4.25	31.01	2.95	1.375	2.5	0.2	2.75	11.26	1.5	
287AT	3.91	13.94	13.88	1.88	3.5	0.16	3.75	4.75	33.75	3.45	1.625	3.0	0.2	3.25	10.89	1.5	
288AT	3.91	13.94	13.88	1.88	3.5	0.16	3.75	4.75	35.47	3.45	1.625	3.0	0.2	3.25	12.62	1.5	
327AT	4.41	15.94	15.88	2.13	4.0	0.16	4.25	5.25	36.69	3.95	1.875	3.5	0.2	3.75	11.80	1.5	
328AT	4.41	15.94	15.88	2.13	4.0	0.16	4.25	5.25	38.57	3.95	1.875	3.5	0.2	3.75	13.68	1.5	
L328AT	4.41	15.94	15.87	2.13	4.0	0.02	4.25	5.25	41.19	3.95	1.875	3.5	0.2	3.75	16.30	1.5	
329AT	4.41	15.94	15.88	2.13	4.0	0.16	4.25	5.25	41.19	3.95	1.875	3.5	0.2	3.75	16.30	1.5	

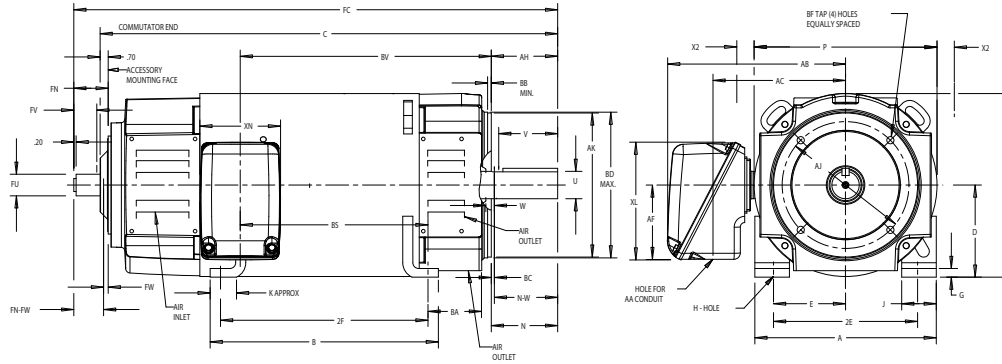
Notes:

- * Dripproof, fully guarded machines can be used for wall or ceiling mounting. Assembly modifications must be made to maintain proper enclosure.
 - 1 Dimensions "D" will not be exceeded. When exact dimension is required, shims up to .03 inches may be necessary where dimension "D" is over 8 inches, shims up to .06 inch may be necessary.
 - 2 Splashproof machines will have additional covers, increasing the overall width at the commutator end and drive end side cover openings.
 - 3 "V" represents minimum length of shaft available for hubs.
 - 4 Shaft diameters 1.5 inches and smaller will come within the limits of +0.0000 inch -0.0005 inch. Diameters larger than 1.5 inches will come within the limits of +0.0000 inch -0.0010 inch. Shaft runout on diameters 1.625 inches and smaller shall not exceed .002 inch indicator reading. Diameters larger than 1.625 inches shall not exceed .003 inch indicator reading.
 - ◇ For shipping weight add 15% to net weight.
- Conduit box will be assembled on the right hand side facing the commutator end for motors, and on the left hand side facing the commutator end for generators. Conduit box will be assembled on opposite side of frame, if so specified. Conduit box may be oriented to accommodate customer's application. Dimensions pertaining to conduit boxes vary according to rating. Refer to GE for dimensions.
- The standard single shaft machine has the commutator end bearing bracket and shaft prepared to accept accessories. Commutator end shaft extension is furnished only when specifically ordered, and is prepared for accessory drive.

DC Motors – Kinamatic™

Type CD, Dripproof Fully Guarded* Splashproof, Totally Enclosed Non-ventilated
Frames 218ATC to 329ATC with feet

Motor Dimensions (cont.)



Frame Size	Approx Net Wt. (lbs) \diamond	Approx Wk2 of Arm (Lb. Ft.)	Drive End Key			Comm. End Key			Dimensions in Inches																
			Width	Thick	Length $\pm .03$	Width	Thick	Length $\pm .03$	A Max	B Max	C	D ⁽¹⁾	E	2F	G	H	J	K	N	O	P	U ⁽⁴⁾	V ⁽³⁾	W	N-W
218ATC	234	1.35	0.3125	0.3125	1.75	0.2500	0.2500	1.00	10.40	11.56	24.22	5.25	4.25	10.0	0.50	0.4062	2.00	2.2	2.97	10.46	10.42	1.375	2.5	0.22	2.75
219ATC	261	1.49	0.3125	0.3125	1.75	0.2500	0.2500	1.00	10.40	12.56	25.22	5.25	4.25	11.0	0.50	0.4062	2.00	2.2	2.97	10.46	10.42	1.375	2.5	0.22	2.75
2110ATC	389	1.71	0.3125	0.3125	1.75	0.2500	0.2500	1.00	10.40	14.06	26.72	5.25	4.25	12.5	0.50	0.4062	2.00	2.2	2.97	10.46	10.42	1.375	2.5	0.22	2.75
258ATC	378	2.91	0.3750	0.3750	2.25	0.3125	0.3125	1.50	12.40	14.06	27.14	6.25	5.00	12.5	0.62	0.5312	2.25	2.0	3.47	12.46	12.42	1.625	3.0	0.22	3.25
259ATC	420	3.31	0.3750	0.3750	2.25	0.3125	0.3125	1.50	12.40	15.56	28.76	6.25	5.00	14.0	0.62	0.5312	2.25	2.0	3.47	12.46	12.42	1.625	3.0	0.22	3.25
287ATC	522	4.67	0.5000	0.5000	2.50	0.3750	0.3750	2.00	13.88	14.16	30.98	7.00	5.50	12.5	0.64	0.5312	2.50	2.0	3.97	13.94	13.88	1.875	3.5	0.22	3.75
288ATC	577	5.36	0.5000	0.5000	2.50	0.3750	0.3750	2.00	13.88	15.66	32.72	7.00	5.50	14.0	0.64	0.5312	2.50	2.0	3.97	13.94	13.88	1.875	3.5	0.22	3.75
327ATC	720	8.45	0.5000	0.5000	3.00	0.5000	0.5000	2.25	15.88	15.96	33.44	8.00	6.25	14.0	0.75	0.6562	3.00	2.3	4.47	15.94	15.88	2.125	4.0	0.22	4.25
328ATC	798	9.67	0.5000	0.5000	3.00	0.5000	0.5000	2.25	15.88	17.96	35.32	8.00	6.25	16.0	0.75	0.6562	3.00	2.3	4.47	15.94	15.88	2.125	4.0	0.22	4.25
329ATC	917	11.40	0.5000	0.5000	3.00	0.5000	0.5000	2.25	15.88	19.96	37.94	8.00	6.25	18.0	0.75	0.6562	3.00	2.3	4.47	15.94	15.88	2.125	4.0	0.22	4.25

Frame Size	Dimensions in Inches														
	AA = 1.25					AA = 2.00					AA = 3.00				
	AB	AC	AF	XL	XN	AB	AC	AF	XL	XN	AB	AC	AF	XL	XN
210ATC	9.62	7.56	3.62	5.94	4.38	11.48	8.92	4.62	7.38	5.38	Not Available				
250ATC	10.62	8.56	3.62	5.94	4.38	11.74	9.18	4.62	7.38	5.38	Not Available				
280ATC	11.34	9.28	3.62	5.94	4.38	12.46	9.90	4.62	7.38	5.38	14.90	11.28	6.62	10.50	8.56
320ATC	Not Available					13.44	10.88	4.62	7.38	5.38	15.12	11.50	6.62	10.50	8.56

Frame Size	Dimensions in Inches																	
	BA	BB Min	FN	FU ⁽⁴⁾	BC	BF		FV ⁽³⁾	FW	FN-FW	AH	AJ	AK	ZA ⁽²⁾	BD Max	BV	BS	FC
						Tap	Depth											
218ATC	3.50	0.3	2.45	1.125	0.25	.500-13	1.00	2.0	0.2	2.25	1.125	7.25	8.5	1.5	9.00	12.11	8.36	25.97
219ATC	3.50	0.3	2.45	1.125	0.25	.500-13	1.00	2.0	0.2	2.25	1.125	7.25	8.5	1.5	9.00	13.11	9.36	26.97
2110ATC	3.50	0.3	2.45	1.125	0.25	.500-13	1.00	2.0	0.2	2.25	2.500	7.25	8.5	1.5	9.00	14.62	10.87	28.47
258ATC	4.25	0.3	2.95	1.375	0.24	.500-13	1.00	2.5	0.2	2.75	2.500	7.25	8.5	1.5	10.00	14.14	9.65	29.39
259ATC	4.25	0.3	2.95	1.375	0.24	.500-16	1.00	2.5	0.2	2.75	2.500	7.25	8.5	1.5	10.00	15.75	11.26	31.01
287ATC	4.75	0.3	3.45	1.625	0.24	.500-13	1.00	3.0	0.2	3.25	3.000	9.00	10.5	1.5	11.25	15.88	10.87	33.73
288ATC	4.75	0.3	3.45	1.625	0.24	.500-13	1.00	3.0	0.2	3.25	3.000	9.00	10.5	1.5	11.25	17.61	12.62	35.47
327ATC	5.25	0.3	3.95	1.875	0.24	.500-11	1.25	3.5	0.2	3.75	3.750	11.00	12.5	1.5	14.00	17.29	11.80	36.69
328ATC	5.25	0.3	3.95	1.875	0.24	.500-11	1.25	3.5	0.2	3.75	3.750	11.00	12.5	1.5	14.00	19.17	13.68	38.57
329ATC	5.25	0.3	3.95	1.875	0.24	.500-11	1.25	3.5	0.2	3.75	3.750	11.00	12.5	1.5	14.00	21.79	13.68	41.19

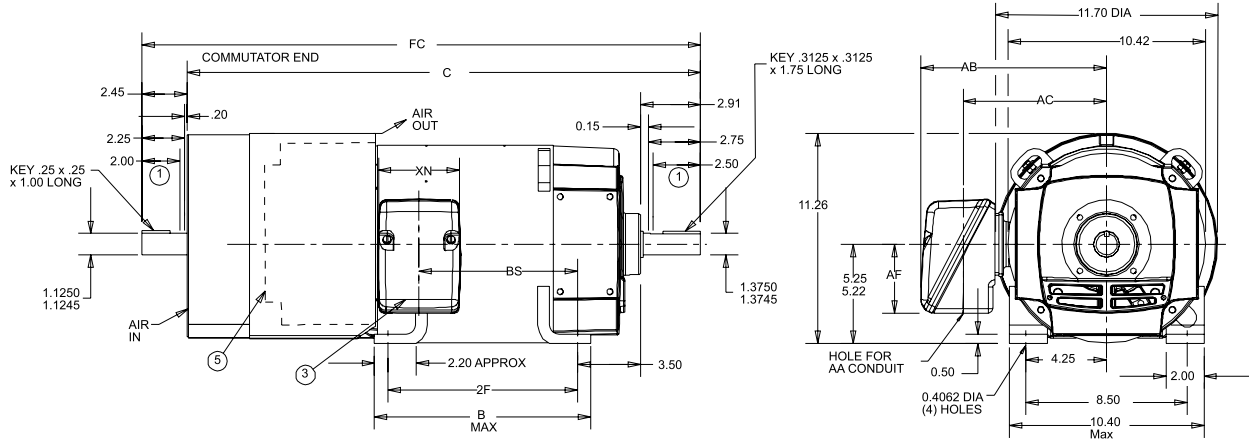
Notes:

- * Dripproof, fully guarded machines can be used for wall or ceiling mounting. Assembly modifications must be made to maintain proper enclosure.
 - 1 Dimensions "D" will not be exceeded. When exact dimension is required, shims up to .03 inches may be necessary where dimension "D" is over 8 inches, shims up to .06 inch may be necessary.
 - 2 Splashproof machines will have additional covers, increasing the overall width at the commutator end and drive end side cover openings.
 - 3 "V" represents minimum length of shaft available for hubs.
 - 4 Shaft diameters 1.5 inches and smaller will come within the limits of +0.0000 inch -0.0005 inch. Diameters larger than 1.5 inches will come within the limits of +0.0000 inch -0.0010 inch. Shaft runout on diameters 1.625 inches and smaller shall not exceed .002 inch indicator reading. Diameters larger than 1.625 inches shall not exceed .003 inch indicator reading.
 - \diamond For shipping weight add 15% to net weight.
- Conduit box will be assembled on the right hand side facing the commutator end for motors, and on the left hand side facing the commutator end for generators. Conduit box will be assembled on opposite side of frame, if so specified. Conduit box may be oriented to accommodate customer's application. Dimensions pertaining to conduit boxes vary according to rating. Refer to GE for dimensions.
- The standard single shaft machine has the commutator end bearing bracket and shaft prepared to accept accessories. Commutator end shaft extension is furnished only when specifically ordered, and is prepared for accessory drive.

DC Motors – Kinamatic™

Type CD, Totally Enclosed Fan Cooled, Frames 218AT to 2110AT with Feet

Motor Dimensions (cont.)



Frame Size	B	C	FC	2F	BS	Approx. Net. Wt. (lbs) ◇
218AT	11.56	26.82	29.34	10.00	8.36	241
219AT	12.56	27.82	30.34	11.00	9.36	259
2110AT	14.06	29.32	31.84	12.50	10.87	287

Conduit Box Dimensions

AA	AB	AC	AF	XL	XN
1.25	9.62	7.56	3.62	5.94	4.38
2.00	11.48	8.92	4.62	7.38	5.38

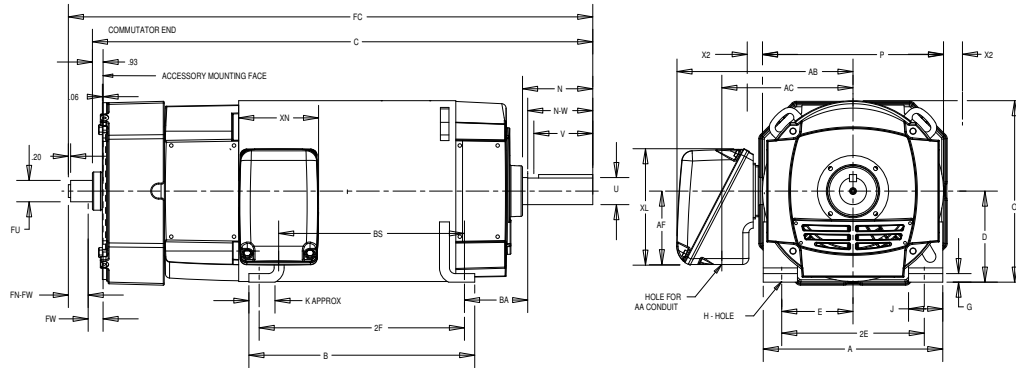
Notes:

- 1 Represents minimum length of shaft available for hubs
- 2 Machine can be used for wall or ceiling mounting
- 3 Conduit box may be turned so that entrance can be made upward, downward, from commutator-end or drive-end, providing mounting conditions permit. Conduit box will be assembled on opposite side of frame, if so specified. Dimensions pertaining to conduit boxes vary according to rating.
- 4 Shaft run-out shall not exceed 0.002 inch total indicator reading on drive-end
- 5 Shroud is removable to permit access to hand-hole covers
- 6 Commutator-end shaft extension is furnished only when specifically ordered.
- ◇ For shipping weight add 15% to net weight.

DC Motors – Kinamatic™

Type CD, Totally Enclosed Fan Cooled, Frames 285AT to 328AT with Feet

Motor Dimensions (cont.)



Frame Size	Approx. Net Wt. (lbs) ◊	Approx. Wk2 of Arm. Lb. Ft ²	Drive End Key			Commutator End Key			Dimensions in Inches									
			Width	Thick	Length ±.03	Width	Thick	Length ±.03	A Max	B Max	C	D ⁽¹⁾	E	2F	G	H	J	K
258AT	397	3.17	0.375	0.375	2.25	0.3125	0.3125	1.50	12.40	14.06	30.32	6.25	5.00	12.5	0.62	0.5312	2.25	2.0
259AT	442	3.57	0.375	0.375	2.25	0.3125	0.3125	1.50	12.40	15.56	31.94	6.25	5.00	14.0	0.62	0.5312	2.25	2.0
287AT	532	5.09	0.500	0.500	2.50	0.3750	0.3750	2.00	13.88	14.16	34.66	7.00	5.50	12.5	0.64	0.5312	2.50	2.0
288AT	587	5.78	0.500	0.500	2.50	0.3750	0.3750	2.00	13.88	15.66	36.40	7.00	5.50	14.0	0.64	0.5312	2.50	2.0
327AT	732	9.20	0.500	0.500	3.00	0.5000	0.5000	2.25	15.88	15.96	37.62	8.00	6.25	14.0	0.75	0.6562	3.00	2.3
328AT	812	10.42	0.500	0.500	3.00	0.5000	0.5000	2.25	15.88	17.96	39.50	8.00	6.25	16.0	0.75	0.6562	3.00	2.3

Frame Size	Dimensions in Inches															
	N	O	P	U ⁽³⁾	V ⁽²⁾	W	N-W	BA	FC	FN	FU ⁽³⁾	FV ⁽²⁾	FW	FN-FW	BS	XP
258AT	3.41	12.75	13.00	1.625	3.0	0.16	3.25	4.25	32.64	3.25	1.375	2.5	0.5	2.75	9.65	12.42
259AT	3.41	12.75	13.00	1.625	3.0	0.16	3.25	4.25	34.26	3.25	1.375	2.5	0.5	2.75	11.26	12.42
287AT	3.91	14.25	14.52	1.875	3.5	0.16	3.75	4.75	37.48	3.75	1.625	3.0	0.5	3.25	10.89	13.88
288AT	3.91	14.25	14.52	1.875	3.5	0.16	3.75	4.75	39.22	3.75	1.625	3.0	0.5	3.25	12.62	13.88
327AT	4.41	16.25	16.52	2.125	4.0	0.16	4.25	5.25	40.94	4.25	1.875	3.5	0.5	3.75	11.80	15.88
328AT	4.41	16.25	16.52	2.125	4.0	0.16	4.25	5.25	42.82	4.25	1.875	3.5	0.5	3.75	13.68	15.88

Frame Size	Dimensions in Inches														
	AA = 1.25					AA = 2.00					AA = 3.00				
	AB	AC	AF	XL	XN	AB	AC	AF	XL	XN	AB	AC	AF	XL	XN
210AT	9.62	7.56	3.62	5.94	4.38	11.48	8.92	4.62	7.38	5.38	Not Available				
250AT	10.62	8.56	3.62	5.94	4.38	11.74	9.18	4.62	7.38	5.38	Not Available				
280AT	11.34	9.28	3.62	5.94	4.38	12.46	9.90	4.62	7.38	5.38	14.90	11.28	6.62	10.50	8.56
320AT	Not Available					13.44	10.88	4.62	7.38	5.38	15.12	11.50	6.62	10.50	8.56

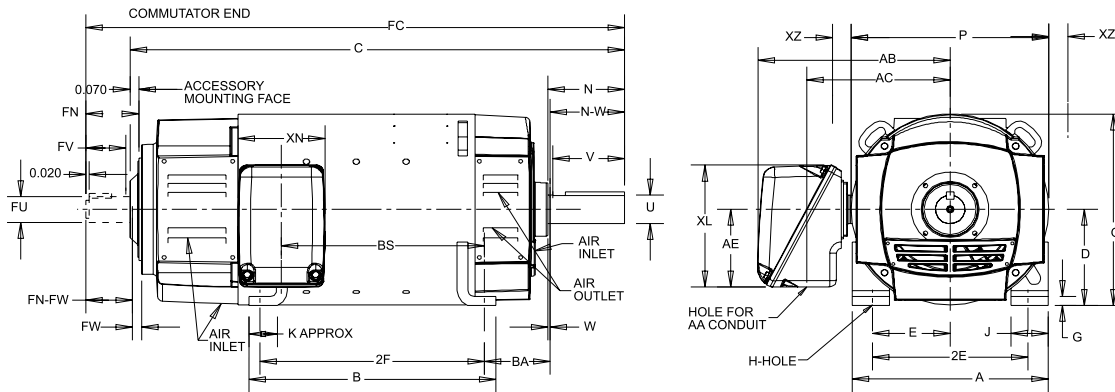
Notes:

- Dimensions "D" will not be exceeded. When exact dimension is required, shims up to .03 inches may be necessary where dimension "D" is 8 inches or less. When dimension "D" is over 8 inches, shims up to .06 inch may be necessary.
 - "V" represents minimum length of shaft available for hubs.
 - Shaft diameters 1.5 inches and smaller will come within the limits of +0.0000 inch -0.0005 inch. Diameters larger than 1.5 inches will come within the limits of +0.0000 inch -0.0010 inch. Shaft runout on diameters 1.625 inches and smaller shall not exceed .002 inch indicator reading. Diameters larger than 1.625 inches shall not exceed .003 inch indicator reading.
- ◊ For shipping weight add 15% to net weight.
- Conduit box will be assembled on the right hand side facing the commutator end for motors, and on the left hand side facing the commutator end for generators. Conduit box will be assembled on opposite side of frame, if so specified. Conduit box may be oriented to accommodate customer's application. Dimensions pertaining to conduit boxes vary according to rating. Refer to GE for dimensions.
- The standard single shaft machine has the commutator end bearing bracket and shaft prepared to accept accessories.
- Commutator end shaft extension is furnished only when specifically ordered, and is prepared for accessory drive.

DC Motors – Kinamatic™

Type CD, Dripproof Fully Guarded*, Splashproof, Totally Enclosed Non-ventilated
Frames 365AT to 5010AY with Feet

Motor Dimensions (cont.)



Frame Size	Approx. Net Wt. (lbs) \diamond	Approx. Wk2 of Arm. Lb. Ft ²	Drive End Key			Commutator End Key			Dimensions in Inches										
			Width	Thick	Length \pm .03	Width	Thick	Length \pm .03	A Max	B Max	C	D ⁽¹⁾	E	2F	G	H	J	K	N
365AT	750	15.61	0.625	0.625	3.50	0.500	0.500	3.00	17.92	14.16	33.70	9.0	7	12.25	0.74	0.8125	3.26	2.31	4.92
366AT	860	18.27	0.625	0.625	3.50	0.500	0.500	3.00	17.92	15.90	35.90	9.0	7	14.00	0.74	0.8125	3.26	2.31	4.92
368AT	1020	22.21	0.625	0.625	3.50	0.500	0.500	3.00	17.92	19.90	38.90	9.0	7	18.00	0.74	0.8125	3.26	2.31	4.92
407AT	1300	35.47	0.625	0.625	4.00	0.625	0.625	3.50	20.00	20.16	40.12	10.0	8	18.00	0.86	0.9375	4.00	2.38	5.42
L407AT	1350	35.54	0.625	0.625	4.00	0.625	0.625	3.50	20.00	20.16	43.52	10.0	8	18.00	0.86	0.9375	4.00	2.38	5.42
409AT	1600	43.81	0.625	0.625	4.00	0.625	0.625	3.50	20.00	24.16	44.62	10.0	8	22.00	0.86	0.9375	4.00	2.38	5.42
L409AT	1650	43.88	0.625	0.625	4.00	0.625	0.625	3.50	20.00	24.16	48.02	10.0	8	22.00	0.86	0.9375	4.00	2.38	5.42
504AT	1900	79.10	0.750	0.750	5.25	0.750	0.750	4.50	24.92	18.96	45.74	12.5	10	16.00	1.11	1.1875	4.50	3.00	6.67
L504AT	2070	79.15	0.750	0.750	5.25	0.750	0.750	4.50	24.92	18.96	47.50	12.5	10	16.00	1.11	1.1875	4.50	3.00	6.67
506AT	2290	98.76	0.750	0.750	5.25	0.750	0.750	4.50	24.92	22.96	49.74	12.5	10	20.00	1.11	1.1875	4.50	3.00	6.67
L506AT	2440	98.81	0.750	0.750	5.25	0.750	0.750	4.50	24.92	22.96	51.50	12.5	10	20.00	1.11	1.1875	4.50	3.00	6.67
508AT	2810	121.87	0.750	0.750	5.25	0.750	0.750	4.50	24.92	27.96	54.74	12.5	10	25.00	1.11	1.1875	4.50	3.00	6.67
L508AT	2970	122.92	0.750	0.750	5.25	0.750	0.750	4.50	24.92	27.96	56.50	12.5	10	25.00	1.11	1.1875	4.50	3.00	6.67
5010AY	4260	157.28	1.000	1.000	6.50	0.750	0.750	5.25	24.92	34.88	65.49	12.5	10	32.00	1.11	1.1875	4.50	3.00	8.42

Frame Size	Dimensions Continued (For Conduit Box Dimensions, refer to publication GEP-387K, Page 124)													BS				XZ ⁽²⁾
	O	P	U ⁽⁴⁾	V ⁽³⁾	W	N-W	BA	FC	FN	FU ⁽⁴⁾	FV ⁽³⁾	FW	FN-FW	AA = 3"	AA = 4"	AA = (2) 4"	AA = Blank	
365AT	17.91	17.90	2.375	4.50	0.17	4.75	5.875	37.45	4.45	2.125	4.00	0.2	4.25	9.02	9.02	6.64	-	0.25
366AT	17.91	17.90	2.375	4.50	0.17	4.75	5.875	39.65	4.45	2.125	4.00	0.2	4.25	11.22	11.22	8.84	-	0.25
368AT	17.91	17.90	2.375	4.50	0.17	4.75	5.875	32.65	4.45	2.125	4.00	0.2	4.25	14.22	14.22	11.84	-	0.25
407AT	20.15	20.38	2.625	5.00	0.17	5.25	6.625	44.37	4.95	2.375	4.50	0.2	4.75	15.18	15.18	12.80	12.80	-
L407AT	20.15	20.38	2.625	5.00	0.17	5.25	6.625	47.77	4.95	2.375	4.50	0.2	4.75	15.18	15.18	12.80	12.80	-
409AT	20.15	20.38	2.625	5.00	0.17	5.25	6.625	48.87	4.95	2.375	4.50	0.2	4.75	19.68	19.68	17.30	17.30	-
L409AT	20.15	20.38	2.625	5.00	0.17	5.25	6.625	52.27	4.95	2.375	4.50	0.2	4.75	19.68	19.68	17.30	17.30	-
504AT	25.15	25.38	3.250	6.25	0.17	6.50	8.500	50.99	5.95	2.875	5.50	0.2	5.75	-	13.26	10.88	10.88	-
L504AT	25.15	25.38	3.250	6.25	0.17	6.50	8.500	52.75	5.95	2.875	5.50	0.2	5.75	-	-	-	11.16	-
506AT	25.15	25.38	3.250	6.25	0.17	6.50	8.500	54.99	5.95	2.875	5.50	0.2	5.75	-	17.26	14.88	14.88	-
L506AT	25.15	25.38	3.250	6.25	0.17	6.50	8.500	56.75	5.95	2.875	5.50	0.2	5.75	-	-	-	15.16	-
508AT	25.15	25.38	3.250	6.25	0.17	6.50	8.500	59.99	5.95	2.875	5.50	0.2	5.75	-	22.26	19.88	19.88	-
L508AT	25.15	25.38	3.250	6.25	0.17	6.50	8.500	61.75	5.95	2.875	5.50	0.2	5.75	-	-	-	20.16	-
5010AY	25.17	25.38	4.125	8.00	0.17	8.25	8.500	71.49	6.70	3.250	6.25	0.2	6.50	-	31.26	28.88	28.88	-

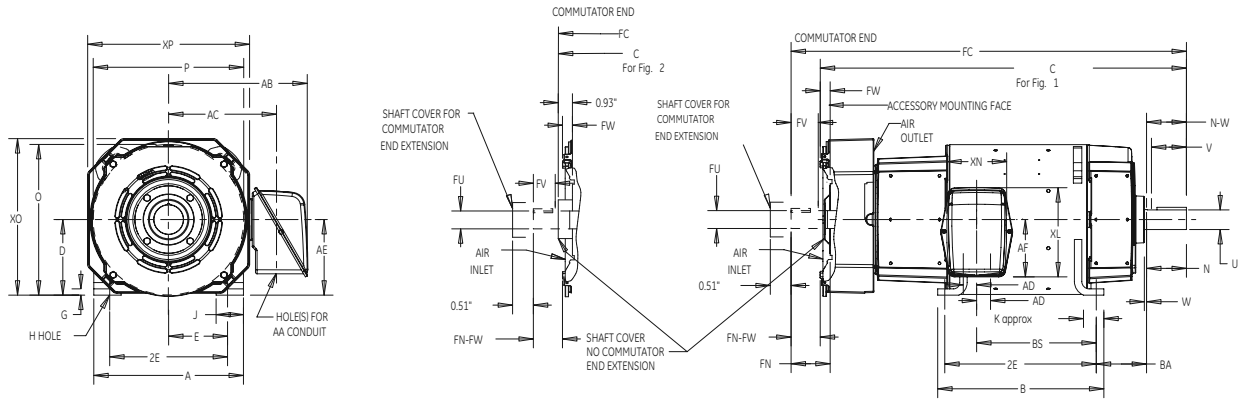
Notes:

- * Dripproof, fully guarded machines can be used for wall or ceiling mounting. Assembly modifications must be made to maintain proper enclosure.
- 1 Dimensions "D" will not be exceeded. When exact dimension is required, shims up to .03 inches may be necessary where dimension "D" is 8 inches or less. When dimension "D" is over 8 inches, shims up to .06 inch may be necessary.
- 2 Splashproof machines will have additional covers, increasing the overall width at the commutator end and drive end side cover openings.
- 3 "V" represents minimum length of shaft available for hubs.
- 4 Shaft diameters 1.5 inches and smaller will come within the limits of +0.0000 inch -0.0005 inch. Diameters larger than 1.5 inches will come within the limits of +0.0000 inch -0.0010 inch. Shaft runout on diameters 1.625 inches and smaller shall not exceed .002 inch indicator reading. Diameters larger than 1.625 inches shall not exceed .003 inch indicator reading.
- \diamond For shipping weight add 15% to net weight.
Conduit box will be assembled on the right hand side facing the commutator end for motors, and on the left hand side facing the commutator end for generators. Conduit box will be assembled on opposite side of frame, if so specified. Conduit box may be oriented to accommodate customer's application. Dimensions pertaining to conduit boxes vary according to rating. Refer to GE for dimensions.
The standard single shaft machine has the commutator end bearing bracket and shaft prepared to accept accessories.
Commutator end shaft extension is furnished only when specifically ordered, and is prepared for accessory drive.

DC Motors – Kinamatic™

Type CD, Totally Enclosed Fan Cooled Frames 365AT to L409AT with Feet

Motor Dimensions (cont.)



Frame Size	See Fig. No.	Approx. Net Wt. (lbs) ◇	Approx. Wk2 of Arm. Lb. Ft ²	Drive End Key			Commutator End Key			Dimensions in Inches										
				Width	Thick	Length ±.03	Width	Thick	Length ±.03	A Max	B Max	C	D ⁽¹⁾	E	2F	G	H	J	K	N
365AT	1	830	15.61	0.625	0.625	3.50	0.500	0.500	3.00	17.92	14.16	38.22	9.0	7.0	12.25	0.74	0.8125	3.26	2.31	4.92
366AT	1	940	18.27	0.625	0.625	3.50	0.500	0.500	3.00	17.92	15.90	40.42	9.0	7.0	14.00	0.74	0.8125	3.26	2.31	4.92
368AT	1	1100	22.21	0.625	0.625	3.50	0.500	0.500	3.00	17.92	19.90	43.42	9.0	7.0	18.00	0.74	0.8125	3.26	2.31	4.92
407AT	2	1380	35.47	0.625	0.625	4.00	0.625	0.625	3.50	20.00	20.16	44.90	10.0	8.0	18.00	0.86	0.9375	4.00	2.38	5.42
L407AT	2	1430	35.54	0.625	0.625	4.00	0.625	0.625	3.50	20.00	20.16	48.30	10.0	8.0	18.00	0.86	0.9375	4.00	2.38	5.42
409AT	2	1680	43.81	0.625	0.625	4.00	0.625	0.625	3.50	20.00	24.16	49.40	10.0	8.0	22.00	0.86	0.9375	4.00	2.38	5.42
L409AT	2	1730	43.88	0.625	0.625	4.00	0.625	0.625	3.50	20.00	24.16	52.80	10.0	8.0	22.00	0.86	0.9375	4.00	2.38	5.42

Frame Size	See Fig. No.	Dimensions Continued (For Conduit Box Dimensions, refer to publication GEP-387K, Page 124)														BS				
		O	P	U ⁽²⁾	V ⁽³⁾	W	N-W	BA	FC	FN	FU ⁽²⁾	FV ⁽³⁾	FW	FN-FW	XO	XP	AA = 3"	AA = 4"	AA = (2) 4"	AA = Blank
365AT	1	17.91	17.90	2.375	4.50	0.17	4.75	5.875	42.47	5.42	2.125	4.00	1.17	4.25	18.62	19.24	9.02	9.02	6.64	-
366AT	1	17.91	17.90	2.375	4.50	0.17	4.75	5.875	44.67	5.42	2.125	4.00	1.17	4.25	18.62	19.24	11.22	11.22	8.84	-
368AT	1	17.91	17.90	2.375	4.50	0.17	4.75	5.875	44.67	5.42	2.125	4.00	1.17	4.25	18.62	19.24	14.22	14.22	11.84	-
407AT	2	20.15	20.38	2.625	5.00	0.17	5.25	6.625	49.39	5.42	2.375	4.50	0.67	4.75	19.62	19.24	15.18	15.18	12.80	12.80
L407AT	2	20.15	20.38	2.625	5.00	0.17	5.25	6.625	52.79	5.42	2.375	4.50	0.67	4.75	19.62	19.24	15.18	15.18	12.80	12.80
409AT	2	20.15	20.38	2.625	5.00	0.17	5.25	6.625	53.89	5.42	2.375	4.50	0.67	4.75	19.62	19.24	19.68	19.68	17.30	17.30
L409AT	2	20.15	20.38	2.625	5.00	0.17	5.25	6.625	57.29	5.42	2.375	4.50	0.67	4.75	19.62	19.24	19.68	19.68	17.30	17.30

Frame Size	13.38 x 13.31 AA = Blank, Available Drill Space				
	AB	AE	AF	XL	XN
360AT	Not Available				
400AT	24.76	12.95	6.75	13.50	13.50

Frame Size	Dimensions in Inches																		
	AA = 3						AA = 4						AA = (2) 4						
	AB	AC	AE	AF	XL	XN	AB	AC	AE	AF	XL	XN	AB	AC	AD	AE	AF	XL	XN
360AT	16.08	12.33	9.00	6.44	10.12	7.00	17.82	13.20	9.00	8.50	13.50	8.62	18.72	14.97	3.00	9.00	6.75	13.50	13.50
400AT	17.47	13.72	12.92	6.44	10.12	7.00	19.22	14.60	12.95	8.50	13.50	8.62	20.12	16.37	3.00	12.95	6.75	13.50	13.50

Notes:

Machine can be used for wall or ceiling mounting.

- Dimensions "D" will not be exceeded. When exact dimension is required, shims up to .03 inches may be necessary where dimension "D" is 8 inches or less. When dimension "D" is over 8 inches, shims up to .06 inch may be necessary.
- Shaft diameters 1.5 inches and smaller will come within the limits of +0.0000 inch -0.0005 inch. Diameters larger than 1.5 inches will come within the limits of +0.0000 inch -0.0010 inch. Shaft runout on diameters 1.625 inches and smaller shall not exceed .002 inch indicator reading. Diameters larger than 1.625 inches shall not exceed .003 inch indicator reading.
- "V" represents minimum length of shaft available for hubs.
- ◇ For shipping weight add 15% to net weight.

Conduit box will be assembled on the right hand side facing the commutator end for motors, and on the left hand side facing the commutator end for generators. Conduit box will be assembled on opposite side of frame, if so specified. Conduit box may be oriented to accommodate customer's application. Dimensions pertaining to conduit boxes vary according to rating. Refer to GE for dimensions.

The standard single shaft machine has the commutator end bearing bracket and shaft prepared to accept accessories.

Commutator end shaft extension is furnished only when specifically ordered, and is prepared for accessory drive.

DC Motors – Kinamatic™

Kits and Accessories

Type CD

Blower Kits

Blower kits are designed for standard mounting on the motor commutator end and for addition only to Dripproof Fully Guarded (DPFG) or Dripproof Fully Guarded - Separately Ventilated (DPFG-BV) motors. Blower motors are 230/460 Volts AC, 3 phase, 60 Hertz. To properly mount blower kits on CD180AT frames, drilling and tapping three holes is required. For other applications, refer to factory.

Blower with Filter

Cat. No.	Frame Size	List Price	Price Symbol
A687	CDL182AT-CD188AT	\$5,000	GO-2KITS
A688	CD218AT-CD2110AT	\$5,000	GO-2KITS
A689	CD258AT-CD259AT	\$4,500	GO-2KITS
A690	CD287AT-CD288AT	\$4,500	GO-2KITS
A691	CD327AT-CD328AT	\$4,620	GO-2KITS
A692	CD365AT-CD368AT	\$4,186	GO-2KITS
A693	CD407AT-CD409AT	\$5,000	GO-2KITS
A694	CDL407AT-CDL409AT	\$4,600	GO-2KITS
A695	CD504AT-CD5010AY	\$7,500	GO-2KITS

C-Face Endshield Kits

C-Face endshield kits are designed for mounting on the Fully Guarded or Totally Enclosed Non-Ventilated motors, but requires machine disassembly by a qualified service facility.

Cat. No.	Frame Size	List Price	Price Symbol
A670	CDL182AT-CD189AT (DP)	\$1,000	GO-2KITS
A673	CDL182AT-CD189AT (TEFC)	\$1,000	GO-2KITS
A671	CD218AT-CD2110AT	\$2,400	GO-2KITS
A672	CD258AT-CD259AT	\$1,600	GO-2KITS
A674	CD287AT-CD288AT	\$1,600	GO-2KITS
A676	CD327AT-CD328AT	\$1,800	GO-2KITS

Lexan® Covers

Two transparent covers are required to replace metal covers on the brush openings at the commutator. Each kit includes one cover.

Cat. No.	Frame Size	List Price	Price Symbol
A677	CD218AT-CD2110AT	\$400	GO-2KITS
A678	CD258AT-CD259AT	\$450	GO-2KITS
A680	CD287AT-CD288AT	\$700	GO-2KITS
A682	CD327AT-CD329AT	\$700	GO-2KITS
A683	CD365AT-CD409AT	\$700	GO-2KITS
A684	CDL407AT-CDL409AT	\$700	GO-2KITS
A685	CD504AT-CD5010AY	\$700	GO-2KITS

DC Motors – Kinamatic™

Kits and Accessories

Tachometers

The Type AN enclosure provides a compact construction for medium accuracy speed-indicating or speed-regulating application. The AN series tachometers can be furnished with either AC or digital output signal for speed regulation. For information on Type PY or Type BC tachometers, refer to the Tachometer Generator Section.

AN Series

Cat. No.	Frame Size	List Price	Price Symbol
A647	CD182AT-CD328AT	\$4,800	GO-2KITS
A648	CD365AT-CD368AT	\$4,800	GO-2KITS
A649	CD407AT-CD409AT	\$5,200	GO-2KITS
A650	CD504AT-CD5010AY	\$5,200	GO-2KITS

Tachometer Mounting Kits

Tachometer mounting kits are design for mounting on the accessory commutator end shaft extension of Fully Guarded or Totally Enclosed Kinamatic motors, with the exception of TEFC machines. Refer to factory for TEFC motors. This feature is optional on all CD180AT frames. An accessory commutator end shaft extension is supplied on all CD210AT-CD500AT frame motors and will accept a tachometer kit only if the shaft extension is currently not is use. Note: Type BC and Type PY tachometer must be ordered independently of the tachometer mounting kit.

Type BC Tachometer Mounting Kit

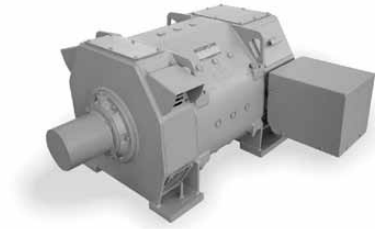
Cat. No.	Frame Size	List Price	Price Symbol
A641	CD182AT-CD328AT	\$3,200	GO-2KITS
A642	CD365AT-CD368AT	\$3,200	GO-2KITS
A643	CD407AT-CD5010AY	\$3,800	GO-2KITS

Type PY Tachometer Mounting Kit

Cat. No.	Frame Size	List Price	Price Symbol
A644	CD182AT-CD328AT	\$4,600	GO-2KITS
A645	CD365AT-CD368AT	\$4,800	GO-2KITS
A646	CD407AT-CD409AT	\$5,000	GO-2KITS
A686	CD504AT-CD5010AY	\$5,200	GO-2KITS

Mill Duty DC Motors – MD800

Standard Features



Introduction

Auxiliary mill motors are specifically designed for mill, crane and hoist service. They may be used advantageously for any application which requires a high ratio of peak to average load torques or where a motor is required to accelerate, decelerate or reverse rapidly under conditions of severe duty-cycle operation. Armored motors are designed to meet the standards established by the Association of Iron and Steel Technology (AIST).

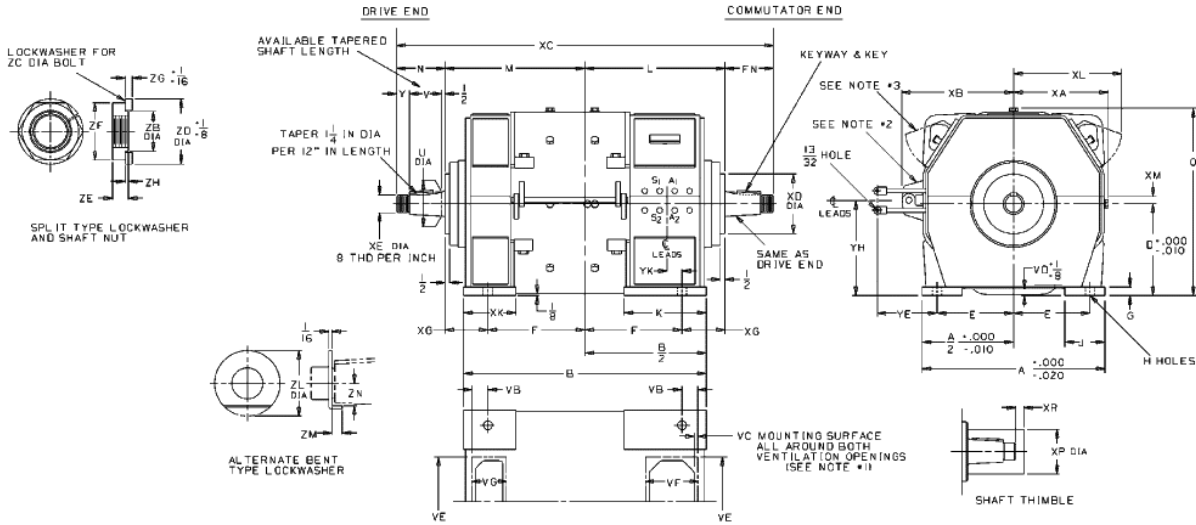
HP Range	5-250
Voltage	230 Volt DC
Altitude	3300 ft
Ambient	40°C
Bearing Type	Single-width solid cylindrical roller bearing
Enclosures	Totally Enclosed and Forced Ventilated
Frames	Horizontally split steel frame with lifting lugs
Frame Size	MD802 through MD818
Insulation Class	H
Leads	Exit frame F2 configuration (conduit box not standard)
Shaft	Tapered and equal on DE and CE and replaceable without disturbing the windings
Speed	Various
Temperature Rise	75°C rise by thermometer or 110°C rise by resistance
Time Ratings	Continuous, 30 minutes or 60 minutes
Warranty	24 months from date of purchase or 30 months from date of shipment; whichever occurs first
Winding	Series, Shunt, and Compound

Standard Type Product Offering

Frame Size	60 min. 75°C Rise Totally Enclosed, or Continuous, 75°C Rise Force-Ventilated				30 min. 75°C Rise Totally Enclosed			Continuous Duty Cycle, 30% Time On, 75°C Rise, Totally Enclosed					
	HP	Full-Load Speed RPM (Approx.)			HP	Full-Load Speed RPM (Approx.)		Full-Load Speed RPM (Approx.)					
		Series	Compound or Shunt	Adjustable Speed		Series	Compound	Series		Compound		Shunt	
		HP	RPM	RPM		HP	RPM	HP	RPM	HP	RPM	HP	RPM
802A	5	900	1025	1025/2050	6.5	750	925	5.5	840	5	1080	5	1130
802B	7.5	800	900	900/1800	10	675	775	8	780	7.5	950	7.5	1000
802C	10	800	900	900/1800	13.5	675	775	10	800	9.5	940	9	1000
803	15	725	800	800/2000	19	620	725	15	725	14.5	840	14	880
804	20	650	725	725/1800	26	580	650	20	650	18.5	775	17	800
806	30	575	650	650/1950	39	500	600	30	575	28.5	690	25	715
808	50	525	575	575/1725	65	450	525	40	570	37.5	625	35	630
810	70	500	550	550/1650	90	440	500	60	550	52.5	615	45	600
812	100	475	515	515/1300	135	420	475	85	510	75	580	60	565
814	150	460	500	500/1250	200	400	460	115	515	110	565	85	560
816	200	450	480	480/1200	265	400	450	150	500	140	540	110	535
818	250	410	435	435/1100	325	360	400	185	485	165	490	130	470

Mill Duty DC Motors – MD800

Dimensions



8.22

DC Motors – MD800

FRAME	APPROX NET WT IN LBS	DIMENSIONS IN INCHES																				
		A	B	D	E	F	G	H	J	K	L	M	O	XA	XB	XC	XD	XG	XK	XL	XM	XP
802	600	15	20 1/2	7 5/8	6 1/4	8 1/4	3 1/4	25 3/32	3 5/8	8 5/8	12	15 9/16	8 3/16	9 7/8	32 7/8	4 1/2	3 3/4	5 1/8	9 3/4	8 5/8	2 3/4	1 9/16
803	770	17	23 1/2	8 1/2	7	9	7 7/8	29 3/32	3 5/8	9 1/8	13 1/2	17 5/16	9	10 11/16	37	5 1/2	4 1/2	5 7/8	10 5/8	8 5/8	3 5/8	1 5/8
804	960	18	25 1/2	9	7 1/2	9 1/2	7 7/8	29 3/32	4	9 3/4	14 1/2	18 5/16	9 5/16	11	39	5 1/2	5	5 3/4	10 7/8	3 3/4	3 5/8	5 5/8
806	1300	20	27 1/2	10	8 1/4	10 1/2	1"	1 1/32	4 1/4	10	15 1/2	20 5/16	10 5/16	12 1/4	42 1/4	6 1/4	5	6 3/4	12	3 3/4	4 1/4	1 1/4
808	1790	22 3/4	31 1/4	11 1/4	9 3/8	12 3/8	1 1/8	1 1/16	4 3/4	11 3/4	17 1/2	22 5/16	11 11/16	13 1/2	47 1/2	7 1/4	5 1/8	7	13 1/2	7 7/8	4 1/4	5 5/8
810	2450	24 1/2	32 1/2	12 1/4	10 1/4	13	1 1/8	1 3/16	5 1/4	11	18 3/4	24 15/16	12 1/16	14 1/2	50 1/4	8	5 3/4	7	14 1/2	1"	6 1/16	1 1/4
812	3280	27	36	13 3/8	11 1/4	14 1/4	1 1/4	1 1/16	5 3/4	11	20 1/2	27 3/16	13 3/16	15 5/8	55	8 3/4	6 1/4	8 1/4	15 3/4	1"	6 1/16	5 5/8
814	4500	30	41 1/2	14 3/4	12 1/2	16	1 1/2	1 9/16	6 1/4	13 1/2	23 1/4	29 15/16	15 3/16	—	60 3/4	10	7 1/4	8 3/4	17 1/4	1 1/8	7 11/16	1 3/8
816	5780	32 1/2	46 3/4	16	13 1/2	17 1/2	1 1/2	1 13/16	7 1/4	17 1/2	26	32 7/16	16 7/16	—	67 1/2	10	8 1/2	9 3/4	19 1/2	1 1/4	7 11/16	3 1/4
818	7500	36	49 3/4	17 3/4	15	19 1/2	1 3/4	1 1/16	7 3/4	17 3/4	27 1/2	35 15/16	18 3/16	—	70 5/8	10	8	11	21 1/2	1 3/8	7 11/16	1 1/16

FRAME	APPROX NET WT IN LBS	DIMENSIONS IN INCHES																										
		SHAFT					KEYWAY			KEY			NUT AND LOCKWASHER							VENT. DUCT FLANGE SURFACE				MOTOR LEADS				
		N FN	U	V	Y	XE	WIDTH	DEPTH	LGTH	ZB	ZC	ZD	ZE	ZF	ZG	ZH	ZL	ZM	ZN	VB	VC	VD	VE	VF	VG	YE	YH	YK
802	600	4 7/16	1 3/4	2 3/4	1 3/16	1"	1 1/2	1 1/4	2 5/8	1 3/8	1 1/2	2 3/8	7 7/8	2	1 1/4	3 1/16	2 1/2	1 1/4	1"	7 7/8	3 3/8	1 1/2	7 1/4	4 3/4	2 3/16	7	8 5/8	3
803	770	5	2	3 1/4	1 1/4	1 1/4	1 1/2	1 1/4	3 1/8	1 1/2	1 1/2	2 3/8	15 1/16	2 1/4	1 1/4	3 1/16	2 7/8	1 5/16	1 1/8	1 3/4	1 1/2	1 1/2	8 1/2	5	3 1/4	7	9 1/2	3
804	960	5	2	3 1/4	1 1/4	1 1/4	1 1/2	1 1/4	3 1/8	1 1/2	1 1/2	2 3/8	15 1/16	2 1/4	1 1/4	3 1/16	2 7/8	1 5/16	1 1/8	2 1/4	1 1/2	1 1/2	9	5 1/2	2 3/4	7	10	3
806	1300	5 5/8	2 1/2	3 3/4	1 3/8	1 1/2	1 1/2	1 1/4	3 3/4	2	2	2 7/8	1 1/16	2 3/4	2 3/8	5 1/16	3 1/4	3 3/8	1 1/4	2 1/8	1 1/2	3 3/4	10 1/4	6	3 3/8	7	11	3
808	1790	6 1/4	3	4 1/4	1 1/2	2	3 1/4	1 1/4	4 1/8	2 1/2	2 1/2	3 1/2	1 3/16	3 1/2	2 7/16	3 3/8	4 5/16	2 1/32	1 1/2	2	1 1/2	7 7/8	11 1/2	6 1/2	3 1/2	10	12 1/2	3
810	2450	6 3/8	3 1/4	4 1/4	1 5/8	2 1/4	3 1/4	1 1/4	4 1/8	2 3/4	2 3/4	3 3/4	5 1/16	4	1 1/2	7 1/16	4 3/4	3 1/4	1 5/8	2 1/8	1 1/2	7 7/8	12	7	3 5/8	10	13 1/2	3
812	3280	7	3 5/8	4 3/4	1 3/4	2 1/2	3 1/4	1 1/4	4 5/8	3	3	4	1 7/16	4 1/4	1 1/2	7 1/16	5	5 5/8	1 7/8	2 1/2	1 1/2	13 3/4	8 1/4	4 7/8	10	14 5/8	3	
814	4500	7 1/8	4 1/4	4 3/4	1 7/8	3	1"	3 3/8	4 5/8	3 1/2	3 1/2	5	1 9/16	4 3/4	3 3/8	5 1/16	5 7/8	23 3/32	2 7/32	3 3/8	5 5/8	1 1/4	15 1/4	9 1/4	5 1/2	12	16 1/4	3
816	5780	7 3/4	4 5/8	5 1/4	2	3 1/4	1 1/4	3 3/8	5 1/8	4	4	6	1 11/16	5 3/8	3 3/8	5 1/16	6 1/2	5 5/8	2 5/8	4 1/2	1"	1 1/8	16	11	6 5/8	12	17 1/2	4 1/2
818	7500	7 13/16	5	5 3/4	1 9/16	3 1/2	1 1/4	1 1/2	5 5/8	4	4	6	1 1/4	5 3/4	3 3/8	5 1/16	6 3/4	3 1/4	2 5/8	3 7/8	1"	1 3/8	18	12	7 1/8	12	19 1/4	4 1/2